



Certificate of Analysis

Powered by Confident Cannabis
1 of 3

Make Sensi LLC

Scottsdale, AZ 85257
timothy@evaluationtoday.com
(602) 748-7324
Lic. #0084992DAQ7673840006

Sample: 1801C4L0007.0031

Strain: CBD Isolate Batch #1
Batch#: ; Batch Size: - grams
Sample Received: 01/03/2018; Report Created: 01/08/2018; Expires: 01/08/2019

CBD Isolate Batch #1

Concentrates & Extracts, Cannabinoid Isolate



Dear Valued Colleague,

Thank you for selecting C4 Laboratories. Our goal at C4 is to provide reliable data that is interpreted within the appropriate physiological context, to ultimately empower patients to use cannabis medicine more effectively. The data within this report are the result of various analytical methods that have been developed by the team of scientists at C4 Laboratories. For the characterization and quantification of 21 terpene compounds and residual solvents we use Head-Space Gas Chromatography with Flame Ionization Detection (HS-GC-FID). Additionally, Ultra High Performance Liquid Chromatography (UHPLC) is used for the characterization and quantification of the 10 major phytocannabinoids found in cannabis. All data are collected in concert with proper quality assurance/quality control measures (QA/QC), including the use of intermittent analytical blanks, sample spikes, and commercial standards.

As an additional measure of quality control, we provide a historical reference (when available) to analytical results from an equivalent strain of cannabis/cannabis product to draw comparison. We understand that within an individual strain that results may vary as a result of variances in sample homogeneity, analytical methodology, crop conditions, genetic drift, and/or gene flow during hybridization. However, such a comparison can provide valuable insight into sample integrity and/or the phenotypic identity of the analyzed sample.

Additionally, we have interpreted all data within the physiological context provided to us by the growing body of peer-reviewed scientific research studies. Key factors to consider when determining how to most appropriately use a particular strain of cannabis include, but are not limited to, an evaluation of the possible cannabinoid/terpene synergies and an analysis of the various cannabinoid ratios, particular the CBD-A/THC-A, CBD/THC and CBG/CBN ratios. Using the scientific interpretations provided within this report, consult a physician prior to adopting a medical cannabis regimen for the treatment of specific medical conditions.

It is important to note that when analyzing cannabis there can exist natural variability of cannabinoid and terpene concentrations within individual plants. Cannabinoid concentrations in cannabis flower have been found to increase distally with respect to the root mass. As such, the analysis of multiple samples from any plant of interest is recommended.

Thank you again for your confidence in C4 Laboratories. We strive to be an authority on cannabis education, targeted therapies and patient protection. Also, as a research laboratory, we hope to discover novel cannabis constituents through our efforts with academic research programs in the C4 Cannabinomics Collaborative. For more information about how you can collaborate with our research team please visit our website at www.c4lab.com.



1930 S. Alma School Rd.
Mesa, AZ
(480) 219-6460
<http://www.c4lab.com>
Lic#

Aaron Hicks
Director of Laboratory Operations



Scan for
References

Confident Cannabis
All Rights Reserved
support@confidentcannabis.com
(866) 506-5866
www.confidentcannabis.com





Certificate of Analysis

Powered by Confident Cannabis
2 of 3

Make Sensi LLC

Scottsdale, AZ 85257
timothy@evaluationtoday.com
(602) 748-7324
Lic. #0084992DAQT673840006

Sample: 1801C4L0007.0031

Strain: CBD Isolate Batch #1
Batch#: ; Batch Size: - grams
Sample Received: 01/03/2018; Report Created: 01/08/2018; Expires: 01/08/2019

CBD Isolate Batch #1

Concentrates & Extracts, Cannabinoid Isolate



<LOQ
Total THC

99.985%
Total CBD

0 : **1**
THC : CBD

Cannabinoids

Pass
Foreign Matter

Analyte	LOQ	Mass	Mass	Std. Dev.
	%	%	mg/g	
THCa	0.010	ND	ND	
Δ 9-THC	0.010	ND	ND	
CBD	0.010	99.985	999.85	
CBDa	0.010	ND	ND	
CBC	0.010	ND	ND	
CBG	0.010	ND	ND	
CBN	0.010	ND	ND	
THCV	0.010	ND	ND	
Δ 8-THC	0.010	ND	ND	
CBDV	0.010	ND	ND	
Total		99.985	999.85	

1 Unit =

Total THC = THCa * 0.877 + d9-THC
Total CBD = CBDa * 0.877 + CBD
LOQ = Limit of Quantitation; NR = Not Reported; Unless otherwise stated all quality control samples performed within specifications established by the Laboratory.



1930 S. Alma School Rd.
Mesa, AZ
(480) 219-6460
http://www.c4lab.com
Lic#

Aaron Hicks
Director of Laboratory Operations



Scan for
References

Confident Cannabis
All Rights Reserved
support@confidentcannabis.com
(866) 506-5866
www.confidentcannabis.com



This product has been tested by C4 Laboratories LLC using valid testing methodologies and a quality system as required by state law. Values reported relate only to the product tested. C4 Laboratories LLC makes no claims as to the efficacy, safety or other risks associated with any detected or non-detected levels of any compounds reported herein. This Certificate shall not be reproduced except in full, without the written approval of C4 Laboratories LLC.



Certificate of Analysis

Powered by Confident Cannabis
3 of 3

Make Sensi LLC

Scottsdale, AZ 85257
timothy@evaluationtoday.com
(602) 748-7324
Lic. #0084992DAQT673840006

Sample: 1801C4L0007.0031

Strain: CBD Isolate Batch #1
Batch#: ; Batch Size: - grams
Sample Received: 01/03/2018; Report Created: 01/08/2018; Expires: 01/08/2019

CBD Isolate Batch #1

Concentrates & Extracts, Cannabinoid Isolate



1/8/2018 2:11:37 PM Page 1 / 1



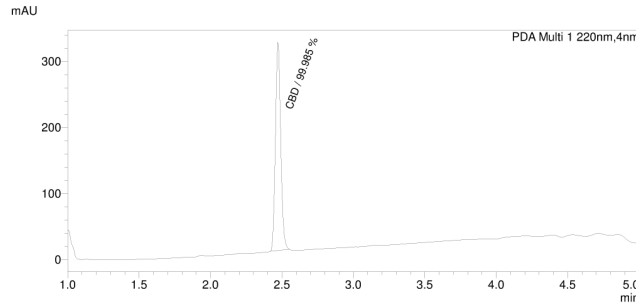
C4 Laboratories, LLC
1930 S. Alma School Rd
Suite B202
Mesa, AZ 85210
www.c4lab.com

"Patient protection through true science"

C4 Laboratories, LLC

Sample Name : 1801C4L0007.0031_CBD_Isolate_Batch1
Sample ID : Make Sensi
Data Filename : 1801C4L0007.0031_CBD_Isolate_Batch1_004.lcd
Method Filename : 10 cannabinoids 7 Jun 2017.lcm
Batch Filename : Batch v18.lcb
Vial # : 1-24
Injection Volume : 5 ul
Date Acquired : 1/8/2018 1:59:50 PM
Date Processed : 1/8/2018 2:06:51 PM
Sample Type : Concentrate
Acquired by : Aaron J. Hicks
Processed by : Aaron J. Hicks

Cannabinoids by HPLC



Cannabinoids

Ret. Time	Area	Conc.	Name
--	--	--	-- CBD-V
--	--	--	-- CBD-A
--	--	--	-- CBG
2.473	807448	99.985%	CBD
--	--	--	-- THC-V
--	--	--	-- CBN
--	--	--	-- THC
--	--	--	-- 8-THC
--	--	--	-- CBC
--	--	--	-- THC-A

C:\LabSolutions\Data\8 Jan 2018\1801C4L0007.0031_CBD_Isolate_Batch1_004.lcd



1930 S. Alma School Rd.
Mesa, AZ
(480) 219-6460
http://www.c4lab.com
Lic#

Aaron Hicks
Director of Laboratory Operations



Scan for
References

Confident Cannabis
All Rights Reserved
support@confidentcannabis.com
(866) 506-5866
www.confidentcannabis.com



This product has been tested by C4 Laboratories LLC using valid testing methodologies and a quality system as required by state law. Values reported relate only to the product tested. C4 Laboratories LLC makes no claims as to the efficacy, safety or other risks associated with any detected or non-detected levels of any compounds reported herein. This Certificate shall not be reproduced except in full, without the written approval of C4 Laboratories LLC.