



# Certificate of Analysis

Powered by Confident Cannabis  
1 of 3

## Make Sensi LLC

Scottsdale, AZ 85257  
timothy@evaluationtoday.com  
(602) 748-7324  
Lic. #0084992DAQT673840006

## Sample: 1801C4L0007.0025

Strain: G.I. Assist 1:1 Batch #1  
Batch#: ; Batch Size: - grams  
Sample Received: 01/03/2018; Report Created: 01/08/2018; Expires: 01/08/2019

## G.I. Assist 1:1 Batch #1

Ingestible, Tincture



Dear Valued Colleague,

Thank you for selecting C4 Laboratories. Our goal at C4 is to provide reliable data that is interpreted within the appropriate physiological context, to ultimately empower patients to use cannabis medicine more effectively. The data within this report are the result of various analytical methods that have been developed by the team of scientists at C4 Laboratories. For the characterization and quantification of 21 terpene compounds and residual solvents we use Head-Space Gas Chromatography with Flame Ionization Detection (HS-GC-FID). Additionally, Ultra High Performance Liquid Chromatography (UHPLC) is used for the characterization and quantification of the 10 major phytocannabinoids found in cannabis. All data are collected in concert with proper quality assurance/quality control measures (QA/QC), including the use of intermittent analytical blanks, sample spikes, and commercial standards.

As an additional measure of quality control, we provide a historical reference (when available) to analytical results from an equivalent strain of cannabis/cannabis product to draw comparison. We understand that within an individual strain that results may vary as a result of variances in sample homogeneity, analytical methodology, crop conditions, genetic drift, and/or gene flow during hybridization. However, such a comparison can provide valuable insight into sample integrity and/or the phenotypic identity of the analyzed sample.

Additionally, we have interpreted all data within the physiological context provided to us by the growing body of peer-reviewed scientific research studies. Key factors to consider when determining how to most appropriately use a particular strain of cannabis include, but are not limited to, an evaluation of the possible cannabinoid/terpene synergies and an analysis of the various cannabinoid ratios, particular the CBD-A/THC-A, CBD/THC and CBG/CBN ratios. Using the scientific interpretations provided within this report, consult a physician prior to adopting a medical cannabis regimen for the treatment of specific medical conditions.

It is important to note that when analyzing cannabis there can exist natural variability of cannabinoid and terpene concentrations within individual plants. Cannabinoid concentrations in cannabis flower have been found to increase distally with respect to the root mass. As such, the analysis of multiple samples from any plant of interest is recommended.

Thank you again for your confidence in C4 Laboratories. We strive to be an authority on cannabis education, targeted therapies and patient protection. Also, as a research laboratory, we hope to discover novel cannabis constituents through our efforts with academic research programs in the C4 Cannabinomics Collaborative. For more information about how you can collaborate with our research team please visit our website at [www.c4lab.com](http://www.c4lab.com).



1930 S. Alma School Rd.  
Mesa, AZ  
(480) 219-6460  
<http://www.c4lab.com>  
Lic#

Aaron Hicks  
Director of Laboratory Operations



Scan for  
References

Confident Cannabis  
All Rights Reserved  
support@confidentcannabis.com  
(866) 506-5866  
[www.confidentcannabis.com](http://www.confidentcannabis.com)





# Certificate of Analysis

Powered by Confident Cannabis  
2 of 3

## Make Sensi LLC

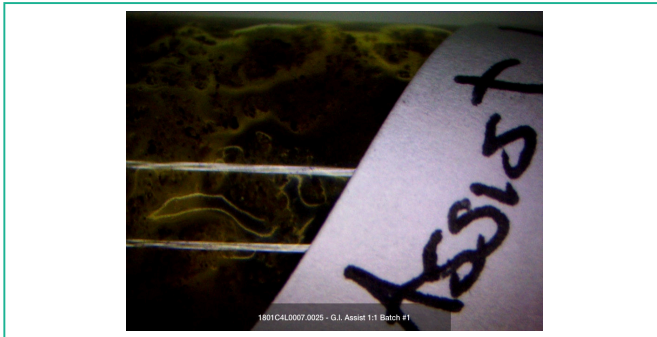
Scottsdale, AZ 85257  
timothy@evaluationtoday.com  
(602) 748-7324  
Lic. #0084992DAQT673840006

## Sample: 1801C4L0007.0025

Strain: G.I. Assist 1:1 Batch #1  
Batch#: ; Batch Size: - grams  
Sample Received: 01/03/2018; Report Created: 01/08/2018; Expires: 01/08/2019

## G.I. Assist 1:1 Batch #1

Ingestible, Tincture



**23.535 mg/mL**  
Total THC

**29.249 mg/mL**  
Total CBD

**1.0** : **1.2**  
THC : CBD

## Cannabinoids

**Pass**  
Foreign Matter

| Analyte      | LOQ   | Mass          | Mass          | Std. Dev.                       |
|--------------|-------|---------------|---------------|---------------------------------|
|              | mg/mL | mg/mL         | mg/g          |                                 |
| THCa         | 0.134 | ND            | ND            |                                 |
| Δ9-THC       | 0.134 | 23.535        | 17.590        | <div style="width: 80%;"></div> |
| CBD          | 0.134 | 29.249        | 21.860        | <div style="width: 90%;"></div> |
| CBDa         | 0.134 | ND            | ND            |                                 |
| CBC          | 0.134 | ND            | ND            |                                 |
| CBG          | 0.134 | 0.642         | 0.480         | <div style="width: 10%;"></div> |
| CBN          | 0.134 | 0.428         | 0.320         | <div style="width: 10%;"></div> |
| THCV         | 0.134 | ND            | ND            |                                 |
| Δ8-THC       | 0.134 | ND            | ND            |                                 |
| CBDV         | 0.134 | ND            | ND            |                                 |
| <b>Total</b> |       | <b>53.855</b> | <b>40.250</b> |                                 |

1 Unit =

Total THC = THCa \* 0.877 + d9-THC  
Total CBD = CBDa \* 0.877 + CBD  
LOQ = Limit of Quantitation; NR = Not Reported; Unless otherwise stated all quality control samples performed within specifications established by the Laboratory.



1930 S. Alma School Rd.  
Mesa, AZ  
(480) 219-6460  
http://www.c4lab.com  
Lic#

Aaron Hicks  
Director of Laboratory Operations



Confident Cannabis  
All Rights Reserved  
support@confidentcannabis.com  
(866) 506-5866  
www.confidentcannabis.com



This product has been tested by C4 Laboratories LLC using valid testing methodologies and a quality system as required by state law. Values reported relate only to the product tested. C4 Laboratories LLC makes no claims as to the efficacy, safety or other risks associated with any detected or non-detected levels of any compounds reported herein. This Certificate shall not be reproduced except in full, without the written approval of C4 Laboratories LLC.



# Certificate of Analysis

Powered by Confident Cannabis  
3 of 3

**Make Sensi LLC**

Scottsdale, AZ 85257  
timothy@evaluationtoday.com  
(602) 748-7324  
Lic. #0084992DAQT673840006

**Sample: 1801C4L0007.0025**

Strain: G.I. Assist 1:1 Batch #1  
Batch#: ; Batch Size: - grams

Sample Received: 01/03/2018; Report Created: 01/08/2018; Expires: 01/08/2019

**G.I. Assist 1:1 Batch #1**  
Ingestible, Tincture



1/8/2018 2:44:22 PM Page 1 / 1



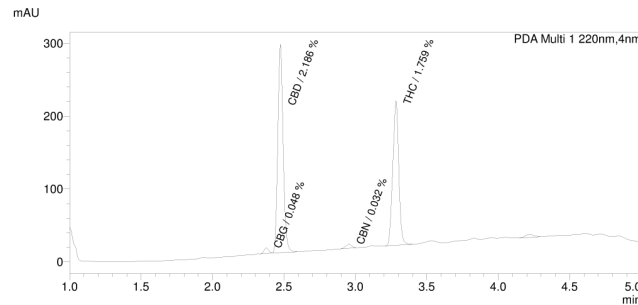
C4 Laboratories, LLC  
1930 S. Alma School Rd  
Suite B202  
Mesa, AZ 85210  
www.c4lab.com

"Patient protection through true science"

## C4 Laboratories, LLC

Sample Name : 1801C4L0007.0025\_G.I.\_Assist\_1to1\_Batch1  
Sample ID : Make Sensi  
Data Filename : 1801C4L0007.0025\_G.I.\_Assist\_1to1\_Batch1\_004.lcd  
Method Filename : 10 cannabinoids 7 Jun 2017.lcm  
Batch Filename : Batch v20.lcb  
Vial # : 1-28  
Injection Volume : 5 uL  
Date Acquired : 1/8/2018 2:29:28 PM  
Date Processed : 1/8/2018 2:36:35 PM  
Sample Type : Extract  
Acquired by : Aaron J. Hicks  
Processed by : Aaron J. Hicks

### Cannabinoids by HPLC



### Cannabinoids

| Ret. Time | Area   | Conc.  | Name      |
|-----------|--------|--------|-----------|
| --        | --     | --     | -- CBD-V  |
| --        | --     | --     | -- CBD-A  |
| 2.377     | 16231  | 0.048% | CBG       |
| 2.476     | 735505 | 2.186% | CBD       |
| --        | --     | --     | -- THC-V  |
| 2.956     | 15124  | 0.032% | CBN       |
| 3.285     | 575370 | 1.759% | THC       |
| --        | --     | --     | -- CB-THC |
| --        | --     | --     | -- CBC    |
| --        | --     | --     | -- THC-A  |

C:\LabSolutions\Data\8 Jan 2018\1801C4L0007.0025\_G.I.\_Assist\_1to1\_Batch1\_004.lcd



1930 S. Alma School Rd.  
Mesa, AZ  
(480) 219-6460  
http://www.c4lab.com  
Lic#

**Aaron Hicks**  
Director of Laboratory Operations



Scan for  
References

Confident Cannabis  
All Rights Reserved  
support@confidentcannabis.com  
(866) 506-5866  
www.confidentcannabis.com



This product has been tested by C4 Laboratories LLC using valid testing methodologies and a quality system as required by state law. Values reported relate only to the product tested. C4 Laboratories LLC makes no claims as to the efficacy, safety or other risks associated with any detected or non-detected levels of any compounds reported herein. This Certificate shall not be reproduced except in full, without the written approval of C4 Laboratories LLC.