



Certificate of Analysis

Powered by Confident Cannabis
1 of 5

Make Sensi LLC

Scottsdale, AZ 85257
timothy@evaluationtoday.com
(602) 748-7324
Lic. #0084992DAQT673840006

Sample: 1803C4L0099.2611

Strain: G.I. Assist 1:1 Batch 2
Batch#: ; Batch Size: - grams
Sample Received: 03/19/2018; Report Created: 03/22/2018; Expires: 03/22/2019

G.I. Assist 1:1 Batch 2

Ingestible, Tincture



Dear Valued Colleague,

Thank you for selecting C4 Laboratories. Our goal at C4 is to provide reliable data that is interpreted within the appropriate physiological context, to ultimately empower patients to use cannabis medicine more effectively. The data within this report are the result of various analytical methods that have been developed by the team of scientists at C4 Laboratories. For the characterization and quantification of 21 terpene compounds and residual solvents we use Head-Space Gas Chromatography with Flame Ionization Detection (HS-GC-FID). Additionally, Ultra High Performance Liquid Chromatography (UHPLC) is used for the characterization and quantification of the 10 major phytocannabinoids found in cannabis. All data are collected in concert with proper quality assurance/quality control measures (QA/QC), including the use of intermittent analytical blanks, sample spikes, and commercial standards.

As an additional measure of quality control, we provide a historical reference (when available) to analytical results from an equivalent strain of cannabis/cannabis product to draw comparison. We understand that within an individual strain that results may vary as a result of variances in sample homogeneity, analytical methodology, crop conditions, genetic drift, and/or gene flow during hybridization. However, such a comparison can provide valuable insight into sample integrity and/or the phenotypic identity of the analyzed sample.

Additionally, we have interpreted all data within the physiological context provided to us by the growing body of peer-reviewed scientific research studies. Key factors to consider when determining how to most appropriately use a particular strain of cannabis include, but are not limited to, an evaluation of the possible cannabinoid/terpene synergies and an analysis of the various cannabinoid ratios, particular the CBD-A/THC-A, CBD/THC and CBG/CBN ratios. Using the scientific interpretations provided within this report, consult a physician prior to adopting a medical cannabis regiment for the treatment of specific medical conditions.

It is important to note that when analyzing cannabis there can exist natural variability of cannabinoid and terpene concentrations within individual plants. Cannabinoid concentrations in cannabis flower have been found to increase distally with respect to the root mass. As such, the analysis of multiple samples from any plant of interest is recommended.

Thank you again for your confidence in C4 Laboratories. We strive to be an authority on cannabis education, targeted therapies and patient protection. Also, as a research laboratory, we hope to discover novel cannabis constituents through our efforts with academic research programs in the C4 Cannabinomics Collaborative. For more information about how you can collaborate with our research team please visit our website at www.c4lab.com.



1930 S. Alma School Rd.
Mesa, AZ
(480) 219-6460
<http://www.c4lab.com>
Lic#

Aaron Hicks
Director of Laboratory Operations



Scan for
References

Confident Cannabis
All Rights Reserved
support@confidentcannabis.com
(866) 506-5866
www.confidentcannabis.com





Certificate of Analysis

Powered by Confident Cannabis
2 of 5

Make Sensi LLC

Scottsdale, AZ 85257
timothy@evaluationtoday.com
(602) 748-7324
Lic. #0084992DAQT673840006

Sample: 1803C4L0099.2611

Strain: G.I. Assist 1:1 Batch 2
Batch#: ; Batch Size: - grams
Sample Received: 03/19/2018; Report Created: 03/22/2018; Expires: 03/22/2019

G.I. Assist 1:1 Batch 2

Ingestible, Tincture



556.191 mg/unit
Total THC

603.769 mg/unit
Total CBD

1.0 : **1.1**
THC : CBD

Cannabinoids

Pass
Foreign Matter

Analyte	LOQ mg/unit	Mass mg/unit	Mass mg/g	Std. Dev.
THCa	3.688	ND	ND	
Δ9-THC	3.688	556.191	15.080	<div style="width: 80%;"></div>
CBD	3.688	603.769	16.370	<div style="width: 90%;"></div>
CBDa	3.688	ND	ND	
CBC	3.688	28.031	0.760	<div style="width: 10%;"></div>
CBG	3.688	11.434	0.310	<div style="width: 5%;"></div>
CBN	3.688	13.647	0.370	<div style="width: 5%;"></div>
THCV	3.688	ND	ND	
Δ8-THC	3.688	ND	ND	
CBDV	3.688	ND	ND	
Total		1213.071	32.890	

1 Unit = Bottle, 1 oz, 36.882661g

Total THC = THCa * 0.877 + d9-THC
Total CBD = CBDa * 0.877 + CBD
LOQ = Limit of Quantitation; NR = Not Reported; Unless otherwise stated all quality control samples performed within specifications established by the Laboratory.



1930 S. Alma School Rd.
Mesa, AZ
(480) 219-6460
http://www.c4lab.com
Lic#

Aaron Hicks
Director of Laboratory Operations



Scan for
References

Confident Cannabis
All Rights Reserved
support@confidentcannabis.com
(866) 506-5866
www.confidentcannabis.com



This product has been tested by C4 Laboratories LLC using valid testing methodologies and a quality system as required by state law. Values reported relate only to the product tested. C4 Laboratories LLC makes no claims as to the efficacy, safety or other risks associated with any detected or non-detected levels of any compounds reported herein. This Certificate shall not be reproduced except in full, without the written approval of C4 Laboratories LLC.



Certificate of Analysis

Powered by Confident Cannabis
3 of 5

Make Sensi LLC

Scottsdale, AZ 85257
timothy@evaluationtoday.com
(602) 748-7324
Lic. #0084992DAQT673840006

Sample: 1803C4L0099.2611

Strain: G.I. Assist 1:1 Batch 2
Batch#: ; Batch Size: - grams
Sample Received: 03/19/2018; Report Created: 03/22/2018; Expires: 03/22/2019

G.I. Assist 1:1 Batch 2

Ingestible, Tincture



Residual Solvents

Analyte	Mass	Status
	PPM	
Acetone	ND	Pass
Acetonitrile	ND	Pass
Chloroform	ND	Pass
Ethanol	16342	Fail
Heptane	ND	Pass
Hexanes	ND	Pass
Isobutane	ND	Pass
Isopropanol	ND	Pass
Methanol	ND	Pass
n-Butane	ND	Pass
Toluene	ND	Pass



Pass
Foreign Matter



1930 S. Alma School Rd.
Mesa, AZ
(480) 219-6460
<http://www.c4lab.com>
Lic#

Aaron Hicks
Director of Laboratory Operations



Scan for
References

Confident Cannabis
All Rights Reserved
support@confidentcannabis.com
(866) 506-5866
www.confidentcannabis.com



This product has been tested by C4 Laboratories LLC using valid testing methodologies and a quality system as required by state law. Values reported relate only to the product tested. C4 Laboratories LLC makes no claims as to the efficacy, safety or other risks associated with any detected or non-detected levels of any compounds reported herein. This Certificate shall not be reproduced except in full, without the written approval of C4 Laboratories LLC.



Certificate of Analysis

Powered by Confident Cannabis
4 of 5

Make Sensi LLC

Scottsdale, AZ 85257
timothy@evaluationtoday.com
(602) 748-7324
Lic. #0084992DAQT673840006

Sample: 1803C4L0099.2611

Strain: G.I. Assist 1:1 Batch 2
Batch#: ; Batch Size: - grams
Sample Received: 03/19/2018; Report Created: 03/22/2018; Expires: 03/22/2019

G.I. Assist 1:1 Batch 2

Ingestible, Tincture



3/22/2018 2:07:04 PM Page 1 / 1

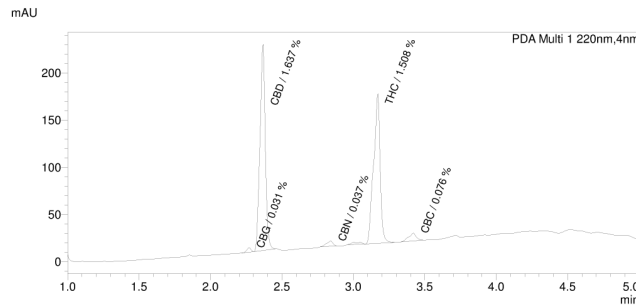


C4 Laboratories, LLC
1930 S. Alma School Rd
Suite B202
Mesa, AZ 85210
www.c4lab.com
"Patient protection through true science"

C4 Laboratories, LLC

Sample Name : 1803C4L0099.2611_G.I._Assist_1:1_Batch_2
Sample ID : Make Sensi LLC
Data Filename : 1803C4L0099.2611_G.I._Assist_1\$1_Batch_2_001.lcd
Method Filename : 10 cannabinoids 6a Mar 2018.lcm
Batch Filename : Batch v14.lcb
Vial # : 1-20
Injection Volume : 5 uL
Date Acquired : 3/22/2018 1:58:44 PM
Date Processed : 3/22/2018 2:05:46 PM
Sample Type : Extract
Acquired by : Aaron J. Hicks
Processed by : Aaron J. Hicks

Cannabinoids by HPLC



Cannabinoids

Ret. Time	Area	Conc.	Name
--	--	--	CBD-V
--	--	--	CBD-A
2.271	9517	0.031%	CBG
2.367	566377	1.637%	CBD
--	--	--	THC-V
2.842	17383	0.037%	CBN
3.171	505184	1.508%	THC
--	--	--	THC-A
3.419	30794	0.076%	CBC
--	--	--	THC-A

C:\LabSolutions\Data\22 Mar 2018\1803C4L0099.2611_G.I._Assist_1\$1_Batch_2_001.lcd



1930 S. Alma School Rd.
Mesa, AZ
(480) 219-6460
http://www.c4lab.com
Lic#

Aaron Hicks
Director of Laboratory Operations



Scan for
References

Confident Cannabis
All Rights Reserved
support@confidentcannabis.com
(866) 506-5866
www.confidentcannabis.com



This product has been tested by C4 Laboratories LLC using valid testing methodologies and a quality system as required by state law. Values reported relate only to the product tested. C4 Laboratories LLC makes no claims as to the efficacy, safety or other risks associated with any detected or non-detected levels of any compounds reported herein. This Certificate shall not be reproduced except in full, without the written approval of C4 Laboratories LLC.



Certificate of Analysis

Powered by Confident Cannabis
5 of 5

Make Sensi LLC

Scottsdale, AZ 85257
timothy@evaluationtoday.com
(602) 748-7324
Lic. #0084992DAQT673840006

Sample: 1803C4L0099.2611

Strain: G.I. Assist 1:1 Batch 2
Batch#: ; Batch Size: - grams
Sample Received: 03/19/2018; Report Created: 03/22/2018; Expires: 03/22/2019

G.I. Assist 1:1 Batch 2
Ingestible, Tincture



C4 Laboratories, LLC
1930 S. Alma School Rd
Suite B202
Mesa, AZ 85210
www.c4lab.com

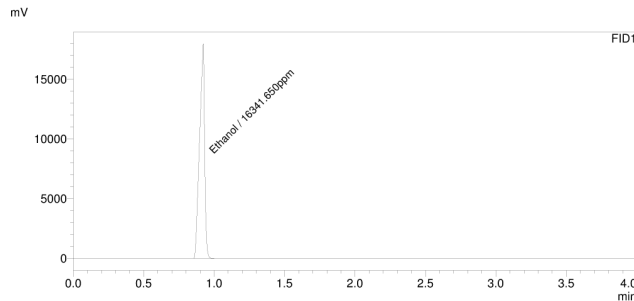
3/22/2018 10:31:59 AM Page 1 / 1

"Patient protection through true science"

C4 Laboratories, LLC

Sample Name	: 1803C4L0099.2611_G.I._Assist_1_1_Batch_2		
Sample ID	: Make Sensi LLC		
Data Filename	: 1803C4L0099.2611_G.I._Assist_1_1_Batch_2.gcd		
Method Filename	: Solvents v1_07Mar18.gcm		
Batch Filename	: Batch v3.gcb		
Vial #	: 26	Sample Type	: Medible
Injection Volume	: 1000 uL		
Date Acquired	: 3/22/2018 2:56:30 AM	Acquired by	: Aaron J. Hicks
Date Processed	: 3/22/2018 3:16:35 AM	Processed by	: Aaron J. Hicks

Solvents Headspace Analysis



FID1	Solvent	Conc.
	t-butane	--
	n-butane	--
	Methanol	--
	Ethanol	16341.650 ppm
	Acetone	--
	Isopropanol	--
	Acetonitrile	--
	RT:1.508	--
	RT:1.878	--
	RT:2.124	--
	RT:2.268	--
	RT:2.932	--
	RT:3.669	--

C:\LabSolutions\Data\21 Mar 2018\1803C4L0099.2611_G.I._Assist_1_1_Batch_2.gcd



1930 S. Alma School Rd.
Mesa, AZ
(480) 219-6460
http://www.c4lab.com
Lic#

Aaron Hicks
Director of Laboratory Operations



Scan for
References

Confident Cannabis
All Rights Reserved
support@confidentcannabis.com
(866) 506-5866
www.confidentcannabis.com



This product has been tested by C4 Laboratories LLC using valid testing methodologies and a quality system as required by state law. Values reported relate only to the product tested. C4 Laboratories LLC makes no claims as to the efficacy, safety or other risks associated with any detected or non-detected levels of any compounds reported herein. This Certificate shall not be reproduced except in full, without the written approval of C4 Laboratories LLC.